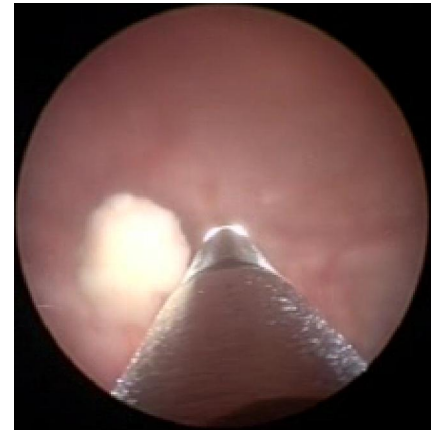
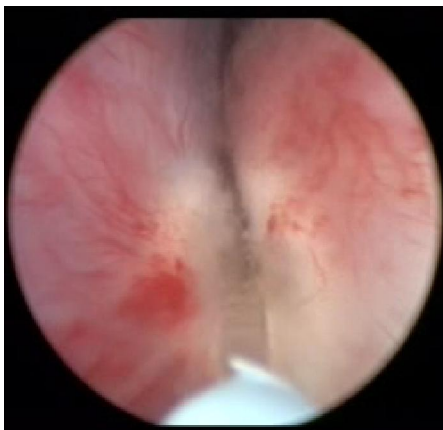


***Holmium Laser enucleation of the prostate
(HoLEP) for benign prostatic hyperplasia -
workshop***

30 September 2011, Sofia

***Military Medical Academy
Clinic of Endourology and SWL***



The one-day workshop will give a comprehensive overview on Holmium Laser enucleation of the prostate (HoLEP) for benign prostatic hyperplasia.

The workshop will be held in the brand new EndoAlpha integrated operating theater at the Department of Urology and Nephrology, Military Medical Academy. The participants will experience live surgery demonstrations of Holmium Laser enucleation of the prostate (HoLEP), performed by Dr. Mark Cynk, Consultant Urological Surgeon, Maidstone and Tunbridge Wells NHS Trust. “State-of-the-Art” and “How I do it” lectures will accompany the workshop.

We will deliberately keep the number of participants small to allow for intensive dialogue between participants and faculty and to get acquainted with the application of VersaPulse® PowerSuite™ in the treatment of benign prostatic hyperplasia.

Registration fee – 100 lv. (50 €). Registrations will be handled strictly on a first-come-first-go basis and only the first 20 participants’ applications will be accepted.

To register for the workshop, please, send an e-mail to endourology@vma.bg or call tel. +359 2 9226313.

***Workshop venue: Military Medical Academy
Department of Urology and Nephrology
Clinic of Endourology and SWL
3, Georgi Sofiyski blvd., Sofia***



Program

30 September 2011

- | | |
|-----------------------------|--|
| <i>09.00 – 10.00</i> | <i>„Introduction to HoLEP” - Mark Cynk</i> |
| <i>10.00 – 10.15</i> | <i>Coffee break</i> |
| <i>10.30 – 13.30</i> | <i>Live surgery demonstrations</i> |
| <i>13.30 – 14.30</i> | <i>Lunch</i> |
| <i>14.30 – 16.30</i> | <i>„HoLEP Tips & Tricks” - Mark Cynk</i> |
| <i>16.30 – 17.00</i> | <i>Coffee break</i> |
| <i>17.00 – 17.30</i> | <i>“Avoiding and dealing with complications of HoLEP” – Mark Cynk</i> |
| <i>17.30</i> | <i>End of Workshop</i> |

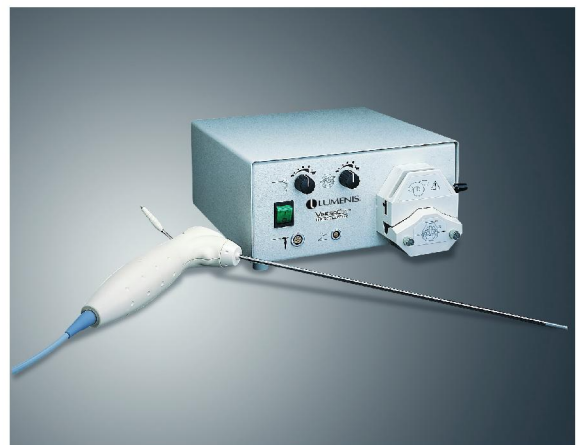
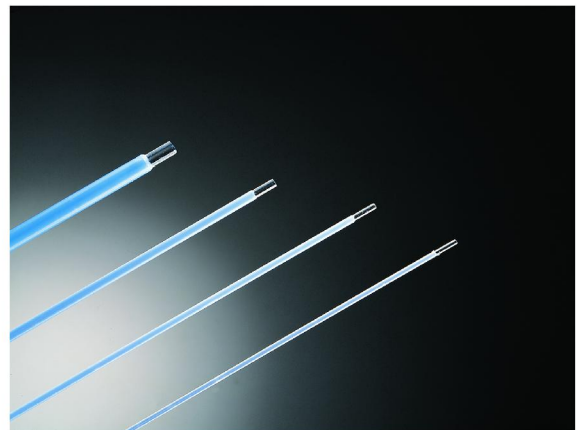
VersaPulse[®] PowerSuite[™]

Holmium and Dual Wavelength Lasers

THE POWER OF ONE LASER FOR MULTIPLE SURGICAL APPLICATIONS

MOST VERSATILE LASER SYSTEMS FOR UROLOGY APPLICATIONS: BPH, STONES, TUMORS AND STRICTURES

PRECISE AND CONTROLLED CUTTING AND ABLATION



www.lumenis.com

KINDY-MED

Sofia, 7 Banat str., Office № 3

Tel: +3592 8624465, +359 888533093; e-mail: rcom@dir.bg